

**Subject:** CGE Global Connections Newsletter  
**Date:** Thursday, February 11, 2021 at 12:26:43 PM Eastern Standard Time  
**From:** Cge-global-connection on behalf of cge-global-connection--- via Cge-global-connection  
**To:** cge-global-connection@lists.fsu.edu  
**Attachments:** ATT00001.txt

[Email not displaying correctly? View it in your browser.](#)



CENTER FOR GLOBAL ENGAGEMENT  
*Division of Student Affairs*  
**Global Connections**  
Connect Locally. Engage Globally.

A promotional graphic for "Diversity Talks" at Florida State University. It features two women, Elçin Haskollar and Tanu Kohli Bagwe, standing on either side of the text. The background is a light purple/pink gradient with a white splash effect behind the central text. The Florida State University logo is at the top center.

FLORIDA STATE UNIVERSITY  
PRESIDENT'S COUNCIL ON DIVERSITY AND INCLUSION

**Diversity Talks**  
with Elçin Haskollar  
& Tanu Kohli Bagwe

On Apple Podcasts,  
Spotify and YouTube

[cge.fsu.edu/diversitytalks](http://cge.fsu.edu/diversitytalks)

# New 'Diversity Talks' Podcast Available Now

Listen to the new "Diversity Talks" Podcast centered around exploring diversity, inclusion, and intercultural competence on Spotify, Apple Podcasts, and YouTube.

Dr. Elçin Haskollar, Global Citizenship Certificate (GCC) Program Director and Faculty, and Dr. Tanu Kohli Bagwe, GCC Teaching Faculty, received the President's Diversity and Inclusion Mini-Grant to fund the production and distribution of the podcast. Episodes highlight the voices of leaders at FSU who drive change to create more inclusive cultures.

Each episode includes a learning goal, a list of discussion questions, and free supplementary resources for incorporation into lesson plans or workshops. They are all available on our website.

The first episode "Carrying the Water: Creating Better Communities" featuring Annie Grier, Senior Coordinator for Diversity & Inclusion in FSU's Equity, Diversity and Inclusion Office, examines the process of promoting diversity and inclusion in public and private institutions and what the public can do to ensure equity and social justice.

Future episodes feature Dr. Petra Doan, Professor of Urban and Regional Planning; Dr. Steve McDowell, Assistant Provost International Initiatives, John H. Phipps Professor of Communication, and College of Communication and Information Associate Dean; Dr. Lara Perez-Felkner, Associate Professor of Higher Education and Sociology; and Terry Coonan, Executive Director of the Center for the Advancement of Human Rights.

[cge.fsu.edu/diversitytalks](https://cge.fsu.edu/diversitytalks)

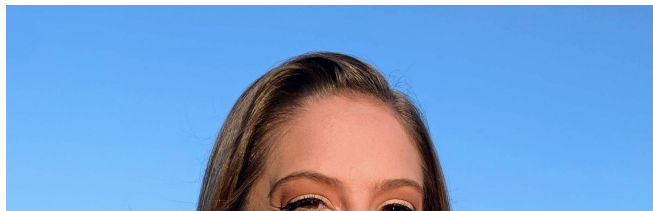
---

## CGE Student Spotlight

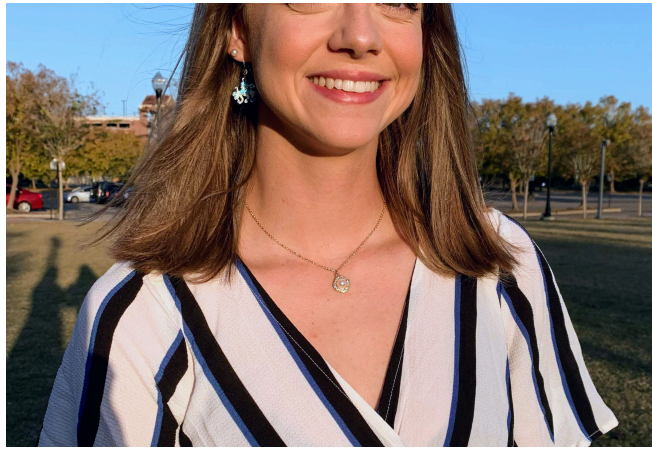
### **Mason Ashford**

Global Citizenship Certificate  
Student

*Marine Biology Major*



Mason Ashford, Global Citizenship Certificate (GCC) student studying Marine Biology at Florida State University, fulfilled the GCC's sustained experience requirement by going on a **Global Exchange** to the University of Waikato in Hamilton, New Zealand during spring 2020.



As a STEM major, Ashford had many academic considerations to weigh when planning her exchange, but she encourages FSU students to take a chance and seize the opportunity to apply for a semester exchange program.

“This experience has definitely instilled a lot of self-confidence in me,” Ashford said. “This allowed me to see how capable I am at planning and being independent. It opened my eyes to how many opportunities there are outside of the United States to further my education or have a career.”

During her time in New Zealand, Ashford applied many of the global concepts taught in GCC's foundational course, Global Perspectives. “I didn't realize just how relevant the material was until I went abroad last Spring and felt the effects of both culture shock and reverse culture shock. The course material helped me navigate through the times much better than I could have on my own. GCC has taught me not only how to navigate an international and interconnected world, but also just how important it is to do so,” she said.

[Read More](#)

## **Upcoming Programs & Deadlines**

---

**Virtual Tax Workshop for  
International Students & Scholars**

# CGE

---

## Tax Workshop

**Friday, February 19**

**1–3 PM | Non-Resident**

*To determine if you need to file as a Non-Resident for tax purposes, [click here](#).*

**3–5 PM | Resident:**

*To determine if you need to file as a Resident for tax purposes, [click here](#).*

Any international student/scholar who received any income or scholarship in 2020 is REQUIRED by federal law to file a U.S. income tax return by a specific date in April every year, usually April 15. You can learn some basics about the U.S. tax system and filing taxes on [this Arctic International video](#). If you need help completing the tax forms for the upcoming tax season, register for the CGE's workshop using the link below.

*Note: You must register to attend. The CGE Staff cannot answer any tax-related questions.*

**Register**

## Virtual International Student Employment Workshop Life After Graduation



**Saturday, March 13**

**10 a.m. – 3 p.m. | Zoom**

In collaboration with the FSU Career Center, the Center for Global Engagement is pleased to be joined by Immigration Attorney Davis Ware in hosting the 2021 International Student Employment Workshop.

- 10 – 11 a.m. | How to Market Yourself

(FSU Career Center)

- 11 a.m. – Noon | How to Find a Job and the Academic Job Search (FSU Career Center)
- Noon – 1 p.m. | Break for lunch
- 1 – 2 p.m. | Part 1: OPT to Work Visa (Immigration Attorney David Ware)
- 2 – 3 p.m. | Part 2: Permanent Work Options (Immigration Attorney David Ware)

[Register Now](#)

## Meditation Mondays

**Meditation  
Mondays**

**12–12:30 pm**

**Every Monday**

**12–12:30 p.m. | Zoom**

Join the CGE for a virtual 20-minute guided mediation. To join us, please sign up using the link below once to receive a weekly email with the Zoom link and login instructions.

[Register for Zoom Link](#)

## Virtual International Coffee Hour\*



### **Every Friday 5–6:30 p.m. | Zoom**

Attend International Coffee Hour every Friday to learn about new cultures and how to make different dishes as CGE's Chef Jesse or representatives from Registered Student Organizations (RSOs) give us a live cooking demonstration. Then move into Zoom rooms to connect in conversation in smaller groups. To join us, please sign up using the link below once to receive a weekly email with the Zoom link and login instructions.

If you are interested in co-hosting as an international student and featuring your home country/culture during ICH this fall, you can submit a request [here](#).

**Register for Zoom Link**

## **Zoom-In Advising for International Students**



### **Monday – Friday 2–4 p.m. | Zoom**

Our Zoom-In Advising for International Students replaces our normal walk-in advising hours. No appointments are necessary. International Student Advisors are available for quick 5-10 minute questions between 2–4 p.m. Monday–Friday by clicking the link below! And as always, please remember to communicate with your advisor via email for any questions you have outside of these hours.



[Click Here](#)

## Virtual English Conversation Club



**Monday – Friday | 4–5 p.m.**

**Tuesday & Thursday | 9–10 a.m.**

***ECC will continue until Friday, April 16.***

Join us for English Conversation Club Monday – Friday from 4–5 p.m. or Tuesdays and Thursdays from 9–10 a.m. on Zoom. Virtual English Conversation Club offers you the opportunity to practice your conversational English individually with a native English-speaking FSU student. Please sign up using the link below once to receive a daily email with the Zoom link and login instructions.

[Register for Zoom Link](#)

## Connect Virtually with CGE\*



Find information about all of the CGE's current virtual programs as well as other virtual intercultural learning opportunities and events at the link below.

[cge.fsu.edu/connect](http://cge.fsu.edu/connect)

---

## **FSU Global Events**

For a full list of FSU's events with a global focus, [check out this full calendar of events](#) or visit [global.fsu.edu](http://global.fsu.edu).



**\* Denotes a [Global Citizenship Certificate](#) qualifying event.**

*The Global Citizenship Certificate is designed to help undergraduate students maximize the rich cultural learning experiences available to them on campus, in the community, and abroad. Learn more: [cge.fsu.edu/globalcitizen](http://cge.fsu.edu/globalcitizen).*

*If you did not receive the link to this newsletter via email, [join our mailing list](#) to have the newsletter delivered directly to your inbox each week.*



FLORIDA STATE UNIVERSITY  
CENTER FOR GLOBAL ENGAGEMENT

If you no longer wish to receive these emails, you can [unsubscribe](#)

Florida State University Center for Global Engagement • 110 S. Woodward Avenue • Tallahassee, FL 32306 US •