

Subject: CGE Global Connections Weekly Newsletter
Date: Thursday, January 24, 2019 at 3:45:15 PM Eastern Standard Time
From: Cge-global-connection on behalf of cge-global-connection@lists.fsu.edu
To: cge-global-connection@lists.fsu.edu
Attachments: ATT00001.txt

[Email not displaying correctly? View it in your browser.](#)



CENTER FOR GLOBAL ENGAGEMENT
Division of Student Affairs
Global Connections
Connect Locally. Engage Globally.



Apply to Go on a Global Exchange by February 1

Through [Global Exchanges](#), students can pay FSU tuition and fees while using financial aid to study at one of FSU's 40+ international partner universities in more than 20 different countries.

Applications to go on a Global Exchange over the summer, next fall, or for the next academic year are due **February 1**. Information sessions are held every Wednesday at 12 p.m. and every Thursday at 2 p.m. in The Globe (GME Building) room 2300.

Mary Green, an FSU student studying social work, [recently completed an exchange program in Australia](#). She was able to use her financial aid, as well as scholarships she received through the FSU College of Social Work and the Benjamin A. Gilman International Scholarship Program, to live in Australia without an additional financial burden.

“These 4.5 months really taught me a lot about independence,” Green said. “I learned a lot about myself. I got to travel Australia and see all the beauty it has to offer. I met so many different people from different cultures and became friends with many.”

[Read More](#)

FSU Center for the Advancement of Human Rights,
FSU College of Social Work,
& The Center for Global Engagement's
Engage Your World Intercultural Dialogue Series present



EMANCIPATORY EDUCATION

The Personal-Political Nexus in the Pursuit
of Social Justice and Transformation

An Invited Lecture by Dr. Vishanthie Sewpaul

Thursday, January 24, 2019

4:30-6:30 p.m.

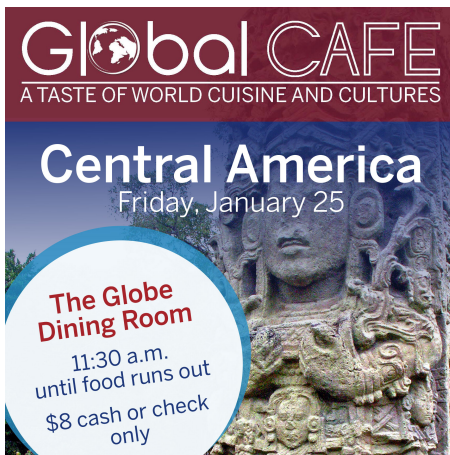
The Globe Auditorium

Engage Your World Tonight, 1/24, at 5 p.m.

Join us for an invited lecture by Dr. Vishanthie Sewpaul, an eminent scholar in the field of policy and social work education in post-apartheid South Africa, at 5 p.m. today, January 24, in The Globe Auditorium.

Professor Sewpaul will explore the use of teaching strategies geared toward helping people appreciate that they are not passive victims of societal control. She will discuss how through heightened consciousness, validation and enhanced self-esteem, people can develop the capacity for constructive engagement to challenge sources of oppression and privilege.

Global Café Featuring Central America*



Friday, January 25

11:30 a.m. until food runs out | The Globe Dining Room

Enjoy a culturally enriching lunch hour eating authentic food, listening to music, and meeting members from the Central American United Student Association for only \$8 (cash or check only).

Mark Your Calendar

Challenges and Opportunities for Universities in Conflict Contexts*



Friday, January 25

10–11:30 a.m. | The Globe Room 2300

Visiting faculty from Bayero University in Northern Nigeria, will discuss the role of universities in promoting peace and providing opportunities for development in settings that have been impacted by conflict.



Mark Your Calendar

Global Citizenship Certificate 'Global Get Togethers'



Tuesday, January 29
6–8 p.m. | The Globe Auditorium

All FSU students interested or enrolled in the Global Citizenship Certificate are invited to attend three Global Get Togethers this spring to connect with other globally-minded students and make life-long friends.

Mark Your Calendar

Info Sessions

Global Citizenship Certificate Info Sessions – Tuesdays 11:00 a.m. & Fridays 1:00 p.m. | The Globe Room 2300 | For more info, visit cge.fsu.edu/globalcitizen.

Global Exchanges Info Sessions – Wednesdays 12:00 p.m. | Thursdays 2:00 p.m. | The Globe Room 2300 | For more info, visit global.fsu.edu/exchanges.

Global Ambassadors Program Info Sessions – Fridays 4-4:30 p.m. (1/7-4/26) | The Globe Room 2300 | For more info, visit cge.fsu.edu/gap.

Deadlines

Global Exchanges Application Deadline for Summer 2019, Fall 2019, & 2019-20 Academic Year – Friday, 2/1 | Note info session dates above. Visit global.fsu.edu/exchanges for more info and to apply. **Note some exchanges may have earlier deadlines*

Global Citizenship Certificate Scholarship Application Deadline – Monday, 4/1 | Visit cge.fsu.edu/gccscholarship for more info and to apply.

More Upcoming Events

International Coffee Hour – Every Friday | 5-6:30 p.m. | The Globe Lounge & Dining Room | [Mark your calendar*](#)

English Conversation Club – Monday–Friday (1/14–4/26) | 4-5 p.m. | The Globe Lounge | [For more info](#)

Global Partner Certificate: Bridging Cultures I – Friday, 1/25 | 9:30 a.m. – 12 p.m. | The Globe Room 2400 | For more info & registration, visit cge.fsu.edu/globalpartner.

Engage Your World: Peace Communication in South Asia (*South Asian Media and Cultural Studies Conference Keynote*) – Thursday, 1/31 | 4:30-6:30 p.m. | The Globe Auditorium | [Mark your calendar*](#)

South Asian Media and Cultural Studies Conference – Thursday, 1/31 – Friday, 2/1 | The Globe Auditorium | [For more info*](#)

Library Research Workshop for International Students: An Introduction to Library Resources and Services – Thursday, 1/31 | 4–5 p.m. | The Globe Room 2300 | [Mark your calendar](#)

Florida International Leadership Conference – Friday, 2/1 – Sunday, 2/3 | Camp Cloverleaf, Lake Placid, Florida | [For more info](#)

International Students: Optional Practical Training (OPT) Workshops – Multiple dates: 2/6, 3/6, 4/3 | 1-3 PM | Globe 2300 ([Note: more dates and times available.](#)) | To register, [click here](#).

Global Partner Certificate: Bridging Cultures I – Friday, 2/8 | 9:30 a.m. – 12 p.m. | The Globe Room 2400 | For more info & registration, visit cge.fsu.edu/globalpartner.

Global Café Puerto Rico – Friday, 2/8 | 11:30 a.m. until food runs out | The Globe Dining Room | \$8 cash or check only | [Mark your calendar](#)*

CGE Game Nights – Multiple dates: 2/8, 3/8, 4/12 | 6:30-8:30 p.m. | The Globe Room 2400 | [Mark your calendar](#)

International Students: Curricular Practical Training (CPT) Workshop – Wednesday, 2/13 | 2-4 p.m. | The Globe Room 2300 | To register, [click here](#).

International Students: Optional Practical Training (OPT) Workshops – Multiple dates: 2/15, 3/15, 4/19 | 2-4 PM | Globe 2300 ([Note: more dates and times available.](#)) | To register, [click here](#).

International Bazaar – Saturday, 2/16 | 2-5 p.m. | Oglesby Union Ballrooms | [Mark your calendar](#)*

Library Research Workshop for International Students: Citation Basics – Thursday, 2/21 | 4–5 p.m. | The Globe Room 2300 | [Mark your calendar](#)

Global Partner Certificate: Bridging Cultures II – Friday, 2/22 | 9:30 a.m. – 12 p.m. | The Globe Room 2400 | For more info & registration, visit cge.fsu.edu/globalpartner.

Global Café Vietnam – Friday, 2/22 | 11:30 a.m. until food runs out | The Globe Dining Room | \$8 cash or check only | [Mark your calendar](#)*

Tax Workshop for International Students & Scholars – Friday, 2/22 | 1-5 p.m. | The Globe Auditorium | To register, [click here](#).

International Students: Employment Workshop (Preparing to Gain Employment in the U.S.) – Saturday, 3/2 | 9:30 a.m. – 3 p.m. | The Globe Auditorium | To register, [click here](#).

Global Partner Certificate: Bridging Cultures III – Friday, 3/8 | 10 a.m. – 12 p.m. | The Globe Room 2400 | For more info & registration, visit cge.fsu.edu/globalpartner.

Global Café Philippines – Friday, 3/8 | 11:30 a.m. until food runs out | The Globe Dining Room | \$8 cash or check only | [Mark your calendar](#)*

Library Research Workshop for International Students: Things You Should Know about Plagiarism – Thursday, 3/14 | 4–5 p.m. | The Globe Room 2300 | [Mark your calendar](#)

International Students: Jumpstart Your Career with Handshake – Wednesday,

3/27 | 2-4 p.m. | The Globe Room 2300 | To register, [click here](#).

Global Partner Certificate: Bridging Cultures IV – Friday, 4/5 | 10 a.m. – 12 p.m.
| The Globe Room 2400 | For more info & registration, visit
cge.fsu.edu/globalpartner.



* Denotes a [Global Citizenship Certificate](#)
qualifying event.

The Global Citizenship Certificate is designed to help undergraduate students maximize the rich cultural learning experiences available to them on campus, in the community, and abroad. Learn more: cge.fsu.edu/globalcitizen.

If you did not receive the link to this newsletter via email, [join our mailing list](#) to have the newsletter delivered directly to your inbox each week.



FLORIDA STATE UNIVERSITY
CENTER FOR GLOBAL ENGAGEMENT

If you no longer wish to receive these emails, you can [unsubscribe](#).

Florida State University Center for Global Engagement • 110 S. Woodward Avenue • Tallahassee, FL 32306 US •