

Subject: CGE Global Connections Weekly Newsletter
Date: Wednesday, October 24, 2018 at 3:55:43 PM Eastern Daylight Time
From: Cge-global-connection on behalf of cge-global-connection@lists.fsu.edu
To: cge-global-connection@lists.fsu.edu
Attachments: ATT00001.txt

[Email not displaying correctly? View it in your browser.](#)



CENTER FOR GLOBAL ENGAGEMENT
Division of Student Affairs
Global Connections
Connect Locally. Engage Globally.



Seminole Dining Co-Hosts International Coffee Hour Featuring Germany on Oct. 26*

Seminole Dining will co-host this International Coffee Hour featuring Chef Sebastian Stallman, a visiting Sodexo chef from Celle, Germany, through the Global Chefs Program. Chef Sebastian will prepare samplings of Bavarian cream

with fresh raspberries and chicken schnitzel with fresh lemon and a hot potato salad.

In addition, a variety of samples from the new Argo Tea location in the Shores Building will be served.

“Chef Sebastian has fully embraced Florida State University,” said Seminole Dining Executive Culinary Director Travis Johnson. “He truly enjoys sharing his food and culture with students across campus.”

[Read More](#)



Attend the Global Citizenship Certificate's Global

Get Togethers

The Global Citizenship Certificate's CALL Leaders have planned two Global Get Togethers this fall so GCC students can connect with other globally-minded students and make life-long friends.

All GCC students and any FSU student interested in the program are welcome to attend both events on [Sunday, Oct. 28, from 4-6 p.m. in The Globe Auditorium](#) and [Sunday, Nov. 18, from 4-6 p.m. in The Globe Dining Room](#).

The Global Get Together this Sunday, Oct. 28, will focus on cultural appropriation; as Halloween approaches, we might see more and more depictions of cultural symbols as offensive costumes. On Sunday, students will gain a deeper understanding of appropriate ways to show cultural appreciation. In addition, students can look forward to fun “Minute to Win It” games and refreshments while they learn in this social environment.

[Read More](#)



Public Presentation on the ISST, Eco-tourism and Farm Tourism in the Philippines*

Friday, October 26

2:00-4:30 p.m. | Globe Room 2300

Dr. Mina T. Gabor, President and Founder of the International School of Sustainable Tourism in the Philippines, will offer a public presentation on the development and current status of the International School of Sustainable Tourism as well as eco-tourism and farm tourism in the Philippines. Dr. Gabor's presentation will be followed by an open discussion on opportunities for collaboration with ISST for FSU faculty and students.

[Read More](#)



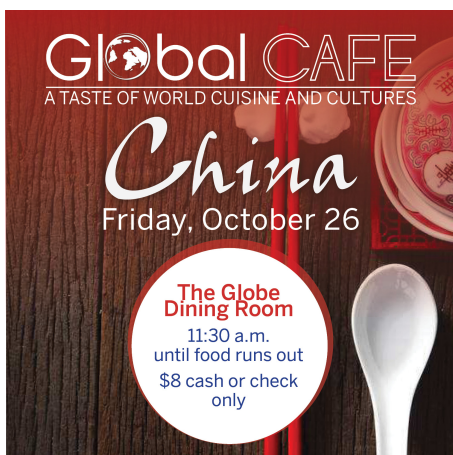
Mexico: Día de los Muertos*

Wednesday, October 24

7-8:30 p.m. | Globe Auditorium

Experience this Mexican holiday tradition of honoring the dead with the Mexican-American Student Association through interactive activities and more!

[Read More](#)



Global Café China*

Friday, October 26

11:30 a.m. until food runs out | Globe Dining Room

Enjoy a culturally enriching lunch hour eating authentic food, listening to music, and meeting members from the Chinese Students and Scholars Associations.

[Read More](#)

Info Sessions

Global Citizenship Certificate Info Sessions – Tuesdays 11:00 a.m. - The Globe Room 2600 | Fridays 1:00 p.m. - The Globe Room 2300 | For more info, visit cge.fsu.edu/globalcitizen.

Global Exchanges Info Sessions – Wednesdays 12:00 p.m. | Thursdays 2:00 p.m. | The Globe Room 2300 | For more info, visit global.fsu.edu/exchanges.

Beyond Borders Info Sessions – Every Friday (9/14–10/26) from 4-4:30 p.m. in The Globe Room 2300 | For more info, visit cge.fsu.edu/beyondborders.

Global Ambassadors Program Info Sessions – Fridays 4:30-5 p.m. (9/14-10/26) | The Globe Room 2300 | For more info, visit cge.fsu.edu/gap.

Deadlines

Global Citizenship Certificate Scholarship Deadline – Thursday, 11/1 | [For more info](#)

Apply to Co-host a Global Café – Friday, 11/30 | For more information and the application, visit cge.fsu.edu/globalcafe.

Global Exchanges Summer, Fall & Academic Year Exchange Deadline – Friday, 2/1 | Note info session dates above. Visit global.fsu.edu/exchanges for more info and to apply. **Note some exchanges may have earlier deadlines*

More Upcoming Events

International Coffee Hour – Every Friday | 5-6:30 p.m. | The Globe Lounge & Dining Room*

English Conversation Club – Monday-Friday (Starting Sept. 3) | 4-5 p.m. | The Globe Lounge | [For more info](#)

Global Partner Certificate: Bridging Cultures II – Friday, 10/26 | 9:30 a.m. – 12 p.m. | The Globe Room 2300 | For more info & registration, visit cge.fsu.edu/globalpartner.

Halloween Pumpkin Carving – Monday, 10/29 | 7-8:30 p.m. | Globe Dining Room | [Mark your calendar!](#) Registration required. International students: bit.ly/CGEpumpkinINTL Domestic

students: bit.ly/CGEpumpkinDOMESTIC

Crazy Rich Asians Movie Screening – Tuesday, 10/30 | 7:15 p.m. | ASLC |
Registration required: bit.ly/CGEmovieOCT

Travel Signature Days (For F-1 International Students) – Wednesday, 11/7 & Thursday, 11/8 | 8 a.m. – 5 p.m. | The Globe Suite 2100 | In preparation for travel outside the U.S., F-1 students can come to the CGE for a travel signature on these days. Fill out the [request form](#) in advance, or fill one out in the office. *Enjoy treats while you wait.*

Global Partner Certificate: Bridging Cultures III – Friday, 11/9 | 10 a.m. – 12 p.m. | The Globe Room 2300 | For more info & registration, visit cge.fsu.edu/globalpartner.

Global Café Iran – Friday, 11/9 | 11:30 a.m. until food runs out | The Globe Dining Room | \$8 cash or check only*

International Students: Optional Practical Training (OPT) Workshops – Multiple dates: 11/16*, 12/3 | 2-4 p.m. | The Globe Room 2400 (Note: 2300 on 11/16) | To register, [click here](#).

CGE Game Night – Friday, 11/16 | 6:30-8 p.m. | The Globe Room 2400 | [For more info](#)

International Education Week – 11/12-11/16 | For more information and the full schedule, visit cge.fsu.edu/iew.



* Denotes a [Global Citizenship Certificate](#) qualifying event.

The Global Citizenship Certificate is designed to help undergraduate students maximize the rich cultural learning experiences available to them on campus, in the community, and abroad. Learn more: cge.fsu.edu/globalcitizen.

If you did not receive the link to this newsletter via email, [join our mailing list](#) to have the newsletter delivered directly to your inbox each week.



If you no longer wish to receive these emails, you can [unsubscribe](#).

Florida State University Center for Global Engagement • 110 S. Woodward Avenue • Tallahassee, FL 32306 US •