

Subject: CGE Global Connections Weekly Newsletter
Date: Wednesday, October 17, 2018 at 2:31:53 PM Eastern Daylight Time
From: Cge-global-connection on behalf of cge-global-connection@lists.fsu.edu
To: cge-global-connection@lists.fsu.edu
Attachments: ATT00001.txt

[Email not displaying correctly? View it in your browser.](#)



CENTER FOR GLOBAL ENGAGEMENT
Division of Student Affairs
Global Connections
Connect Locally. Engage Globally.



Join the CGE and the Mexican-American Student Association (MASA) on **Wednesday, October 24, from 7-8:30 p.m. in The Globe Auditorium** for an Intercultural Program Series event featuring Día de los Muertos, the Day of the Dead. Experience this Mexican holiday tradition of honoring the dead through interactive activities and more.

President of MASA Ruby Ramos-Basaldua, junior studying international affairs, welcomes everyone to attend the event.

"The Mexican-American Student Association has provided a home away from home for FSU Mexican-American Students as well as students interested in the culture," said Ramos-Basaldua. "We are excited to be able to share our culture on campus with the FSU community."

[Mark Your Calendar](#)



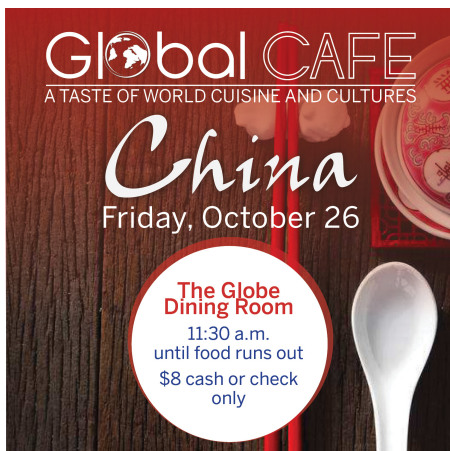
Jumpstart Your Career With Handshake (International Student Workshop)

Wednesday, October 24

2:00-4:00 p.m. | Globe Room 2400

Learn how to navigate the Career Center's complimentary job database and stand out as an applicant. Registration is required.

[Register](#)



Global Café China*

Friday, October 26

11:30 a.m. until food runs out | Globe Dining Room

Enjoy a culturally enriching lunch hour eating authentic food, listening to music, and meeting members from the Chinese Students and Scholars Associations.

[Read More](#)



GCC Global Get Together

Sunday, October 28

4-6 p.m. | Globe Auditorium

Join us for food, fun, and community! Open to all Global Citizenship Certificate students, as well as students interested in learning more about the certificate.

[Read More](#)

Info Sessions

Global Citizenship Certificate Info Sessions – Tuesdays 11:00 a.m. - The Globe Room 2600 | Fridays 1:00 p.m. - The Globe Room 2300 | For more info, visit cge.fsu.edu/globalcitizen.

Global Exchanges Info Sessions – Wednesdays 12:00 p.m. | Thursdays 2:00 p.m. | The Globe Room 2300 | For more info, visit global.fsu.edu/exchanges.

Beyond Borders Info Sessions – Every Friday (9/14–10/26) from 4-4:30 p.m. in The Globe Room 2300 | For more info, visit cge.fsu.edu/beyondborders.

Global Ambassadors Program Info Sessions – Fridays 4:30-5 p.m. (9/14-10/26) | The Globe Room 2300 | For more info, visit cge.fsu.edu/gap.

Deadlines

Beyond Borders Germany Application Deadline – Friday, 10/22 | Note info session dates above. Visit cge.fsu.edu/beyondborders for more info and to apply.

Global Citizenship Certificate Scholarship Deadline – Thursday, 11/1 | [For more info](#)

Global Exchanges Summer, Fall & Academic Year Exchange Deadline – Friday, 2/1 | Note info session dates above. Visit global.fsu.edu/exchanges for more info and to apply. **Note some exchanges may have earlier deadlines*

More Upcoming Events

International Coffee Hour – Every Friday (This Friday, 10/19, is co-hosted with FSU's Middle East Center.) | 5-6:30 p.m. | The Globe Lounge & Dining Room*

English Conversation Club – Monday-Friday (Starting Sept. 3) | 4-5 p.m. | The Globe Lounge | [For more info](#)

International Students: Optional Practical Training (OPT) Workshops – Multiple dates: 11/16*, 12/3 | 2-4 p.m. | The Globe Room 2400 (Note: 2300 on 11/16) | To register, [click here](#).

CGE Game Nights – Multiple dates: 10/19, 11/16 | 6:30-8 p.m. | The Globe Room 2400 | [For more info](#)

Global Partner Certificate: Bridging Cultures II – Friday, 10/26 | 9:30 a.m. – 12 p.m. | The Globe Room 2300 | For more info & registration, visit cge.fsu.edu/globalpartner.

Halloween Pumpkin Carving – Monday, 10/29 | 7-8:30 p.m. | Globe Dining Room | Registration required. International students: bit.ly/CGEpumpkinINTL Domestic students: bit.ly/CGEpumpkinDOMESTIC

Crazy Rich Asians Movie Screening – Tuesday, 10/30 | 7:15 p.m. | ASLC | Registration required: bit.ly/CGEmovieOCT

Global Partner Certificate: Bridging Cultures III – Friday, 11/9 | 10 a.m. – 12 p.m. | The Globe Room 2300 | For more info & registration, visit cge.fsu.edu/globalpartner.

Global Café Iran – Friday, 11/9 | 11:30 a.m. until food runs out | The Globe Dining

Room | \$8 cash or check only*

GCC Global Get Together – Sunday, 11/18 | 4-6 p.m. | Globe Dining Room | [For more info](#)

International Education Week – 11/12-11/16 | For more information and full schedule, visit cge.fsu.edu/iew.



* Denotes a [Global Citizenship Certificate](#) qualifying event.

The Global Citizenship Certificate is designed to help undergraduate students maximize the rich cultural learning experiences available to them on campus, in the community, and abroad. Learn more: cge.fsu.edu/globalcitizen.

If you did not receive the link to this newsletter via email, [join our mailing list](#) to have the newsletter delivered directly to your inbox each week.



If you no longer wish to receive these emails, you can [unsubscribe](#)

Florida State University Center for Global Engagement • 110 S. Woodward Avenue • Tallahassee, FL 32306 US •